



# GMT MONTHLY MEMBERSHIP PROGRESS REPORT

Results as of: 5/31/2019

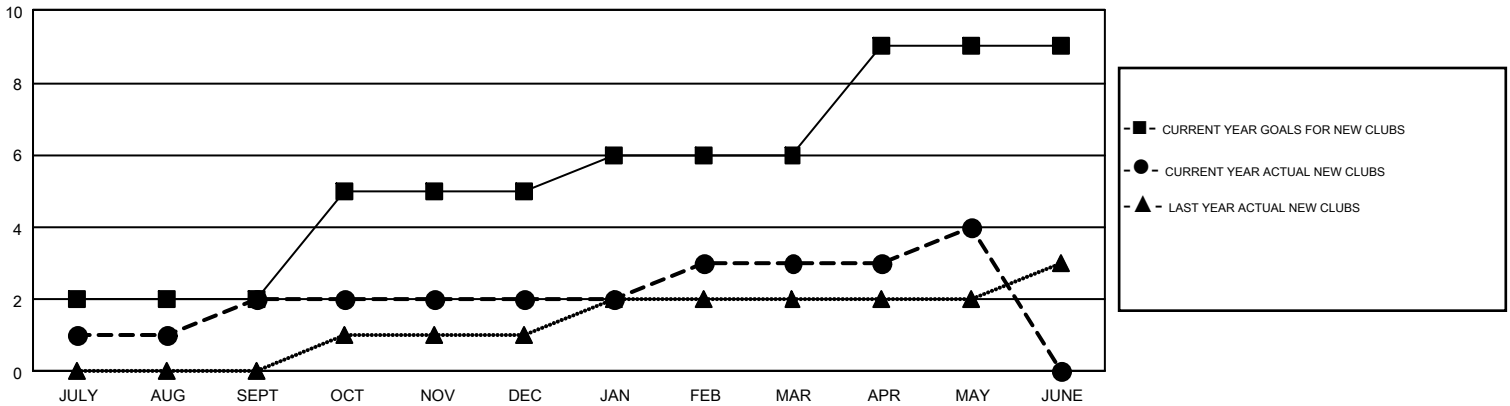
## GMT Constitutional Area 6-Afr, Group J

GMT: IAN KING

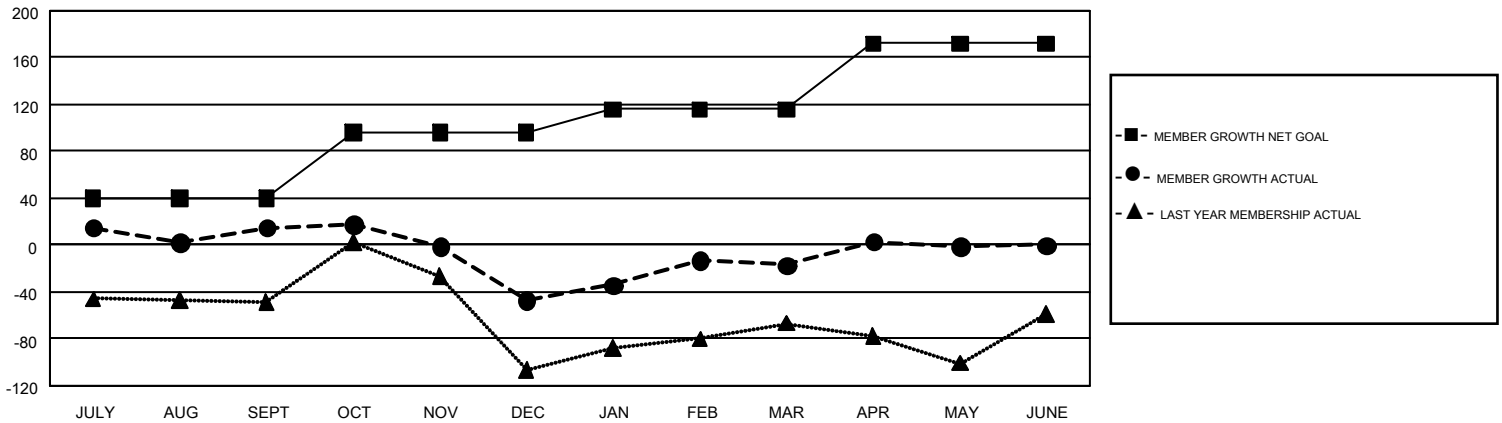
REPORT DOES NOT INCLUDE CLUBS IN UNDISTRICTED AREAS.

Clubs				Members			
RESULTS FOR 2018-2019				RESULTS FOR 2018-2019			
QUARTER	NEW CLUB GOAL	NEW CLUBS	DROPPED CLUBS	QUARTER	MEMBER GROWTH NET GOAL	MEMBER GROWTH ACTUAL	DROPPED MEMBERS ACTUAL (including transfers)
JULY/AUG/SEPT	2	2	0	JULY/AUG/SEPT	40	119	91
OCT/NOV/DEC	3	0	0	OCT/NOV/DEC	56	53	110
JAN/FEB/MAR	1	1	0	JAN/FEB/MAR	20	103	67
APR/MAY/JUNE	3	1	0	APR/MAY/JUNE	56	92	72

GOALS AND ACTUAL NEW CLUBS CUMULATIVE



GOALS AND ACTUAL MEMBERS CUMULATIVE



DROPPED CLUBS: 0	82 CLUBS OF 143 ADDED 1 OR MORE NEW MEMBERS	<u>GENDER DISTRIBUTION</u>
<u>DROPPED MEMBERS</u>	<a href="#">CLICK HERE FOR CUMULATIVE MEMBERSHIP DATA</a>	MALE            1,314 (55.33%)
DECEASED                            18		FEMALE            1,061 (44.67%)
CLUB CANCELLED                        0		TOTAL FAMILY UNIT MEMBERS                            657
OTHER                                        322		FAMILY MEMBERS PAYING HALF DUES                            341
<b>TOTAL                                        340</b>		